

BALDOR® • RELIANCE 

Product Information Packet

VHECP4310T

60HP,3550RPM,3PH,60HZ,364HP,1452M,TEFC,F

Part Detail							
Revision:	F	Status:	PRD/A	Change #:		Proprietary:	No
Type:	AC	Elec. Spec:	A36WG0760	CD Diagram:	416820-002	Mfg Plant:	
Mech. Spec:		Layout:	617428-035	Poles:	02	Created Date:	10-19-2010
Base:		Eff. Date:	03-30-2016	Leads:	3#4,6#6		

Specs			
Catalog Number:	VHECP4310T	Feedback Device:	NO FEEDBACK
Enclosure:	TEFC	Heater Indicator:	No Heater
Frame:	364HP	Insulation Class:	F
Frame Material:	Iron	Inverter Code:	Inverter Ready
Output @ Frequency:	60.000 HP @ 60 HZ	KVA Code:	G
Synchronous Speed @ Frequency:	3600 RPM @ 60 HZ	Lifting Lugs:	Standard Lifting Lugs
Voltage @ Frequency:	460.0 V @ 60 HZ	Motor Lead Quantity/Wire Size:	3 @ 4 AWG
	230.0 V @ 60 HZ	Motor Type:	A36056M
XP Class and Group:	None	Mounting Arrangement:	F1
XP Division:	Not Applicable	Power Factor:	91
Agency Approvals:	CSA EEV	Pulley End Bearing Type:	Ball
Auxillary Box:	No Auxillary Box	Pulley Face Code:	P-Base
Base Indicator:	Bracket Mounted	Shaft Ground Indicator:	No Shaft Grounding
Bearing Grease Type:	Polyrex EM (-20F +300F)	Shaft Rotation:	Reversible
Current @ Voltage:	130.000 A @ 230.0 V	Shaft Slinger Indicator:	Shaft Slinger
	65.100 A @ 460.0 V	Speed Code:	Single Speed
Design Code:	B	Motor Standards:	NEMA
Drip Cover:	Drip Cover	Starting Method:	Direct on line

Duty Rating:	CONT	Thermal Device - Bearing:	None
		Thermal Device - Winding:	None

Nameplate 000613007EW										
CAT.NO.	VHECP4310T			SPEC NO.	P36G3416					
HP	60	AMPS	130/65.1		VOLTS	230/460		DESIGN	B	
FRAME	364HP	RPM	3560		HZ	60	AMB	40	SF	1.15
DRIVE END BEARING	65BC03J30X			PH	3	DUTY	CONT		INSUL.CLASS	F
OPP D.E. BEARING	65BC03J30X			TYPE	P	ENCL	TEFC		CODE	G
D.E.BRG.DATA	6313			POWER FACTOR	90.7		NEMA NOM EFFICIENCY	95		
O.D.E.BRG.DATA	6313			MAX CORR KVAR	05.0		GUARANTEED EFFICIENCY	94.5		
3/4 LOAD EFF.	95.5			NEMA NOM/CSA QUOTED EFF			MOTOR WEIGHT			
SER.NO.										

Nameplate 000901002AAA	
SUIT FOR 208 V AT 144 AMPS	

Parts List		
Part Number	Description	Quantity
SA207165	SA P36G3416	1.000 EA
RA194432	RA P36G3416	1.000 EA
000613006PU	N/P (RELEASE QTY 10,000) UL CSA LABEL	1.000 EA
000613007EW	N/P BALDOR	1.000 EA
000692000FF	N/P	1.000 EA
000692000VD	LABEL WARNING	1.000 EA
000901002AAA	N/P BLANK (RELEASE QTY 1,500)	1.000 EA
421948032	LABEL, MYLAR	1.000 EA
004824015A	GREASE POLYREX EM	0.544 LB
032018008AK	HHCS 1/4-20X1 PLATED	4.000 EA
032018012DK	HHCS 1/2-13X1-1/2 PLTD.	4.000 EA
032018030CK	HHCS 3/8-16X3-3/4 PLATED	3.000 EA
032018024CK	HHCS 3/8-16X3 PLTD.	3.000 EA
034180012DA	KEY 1X4X1/4X1-1/2 L	1.000 EA
034530052AB	P/NIP 1/8X6-1/2 GALV.	1.000 EA
034690002AB	PPLG 1/4" PLTD.	1.000 EA
047174002D	EXT SNAP RING(360-440)	1.000 EA
078559042AE	F/C 360 078559001A	1.000 EA
085922073B	BRKT 360 085922072WCC KB	1.000 EA
415045002E	SLGR	1.000 EA
415072001B	CLAMP	1.000 EA
415096002A	CPLG 1/8 HEX TYPE	1.000 EA
418151057A	PLASTIC DRAIN,ODE BRKT	1.000 EA
032018010CK	HHCS 3/8-16X1-1/4 PLTD. 032018010CR	4.000 EA

Parts List (continued)		
Part Number	Description	Quantity
032018022CK	HHCS 3/8-16X2-3/4 PLTD	4.000 EA
702674001C	FAN 360	1.000 EA
032018012DK	HHCS 1/2-13X1-1/2 PLTD.	4.000 EA
034690002AB	PPLG 1/4" PLTD.	1.000 EA
089495002A	BRKT 360 089495001WCA	1.000 EA
410700004F	WSHR	1.000 EA
415045002E	SLGR	1.000 EA
418151057A	PLASTIC DRAIN,ODE BRKT	1.000 EA
033512008LB	HHTTS 1/4-20X1 PLATED	4.000 EA
034000014AB	WSH ID.406 OD.812 TH.065	4.000 EA
034017014AB	LCKW 3/8 STD. PLATED	4.000 EA
035000001A	ALFTG 1/8" 1610-BL	1.000 EA
035000001A	ALFTG 1/8" 1610-BL	1.000 EA
048977006B	GRFTG - XP	1.000 EA
065776000C	GASKET,MAIN CBOX, 320-400	1.000 EA
067053000B	GASK 320-400	1.000 EA
076708000BB	CONDUIT BOX-360	1.000 EA
076709000A	C/B Cover - 360	1.000 EA
405851012AN	SPACE	4.000 EA
415000103H	T/LUG #2AWG-4/0AWG	1.000 EA
418150003A	GREASE FITTING CAP	1.000 EA
702641041A	D/CVR 360 SUB PAINT	1.000 EA
418150003A	GREASE FITTING CAP	1.000 EA
032018012EK	HHCS 5/8-11X1-1/2L PLTD.	4.000 EA

Product Information Packet: VHECP4310T - 60HP,3550RPM,3PH,60HZ,364HP,1452M,TEFC,F

033775004EA	DRSCR #6-1/4 304 S.S.	4.000 EA
034017018AB	LCKW 5/8" 034017018AF	4.000 EA
034000014AB	WSH ID.406 OD.812 TH.065	4.000 EA
034180024FA	KEY 3/8X3/8X3 L	1.000 EA
609013011C	LFT/P - 360	2.000 EA
14PA1000	PACKAGING 314 GROUP COMBINED PRINT	1.000 EA
MG1025N19	WILKO 778.50 BLUE GREEN - 55 GAL DRUMS	0.250 GA
032018005DL	1/2-13 X 5/8 SILICON BRONZE HHCS	1.000 EA

S/O	FRAME	HP	TYPE	PHASE/ HERTZ	RPM	VOLTS
	364HP	60	P	3/60	3560	230/460
AMPS	DUTY	AMB %C/ INSUL	S.F.	NEMA DESIGN	CODE LETTER	ENCLOSURE
130/65.1	CONT	40/F	1.15	F	G	TEFC
E/S	ROTOR	TEST S.O.	TEST DATE	STATOR RES. @25 °C OHMS (BETWEEN LINES)		
491281	418141005XE	---	---	.0254/101		

PERFORMANCE

LOAD	HP	AMPERES	RPM	% POWER FACTOR	% EFFICIENCY
NO LOAD	0	14.1	3600	6.54	0
1/4	15.0	20.8	3590	72.8	93.1
2/4	30.0	33.4	3580	88.2	95.3
3/4	45.0	48.6	3570	90.7	95.5
4/4	60.0	65.1	3559	90.7	95.1
5/4	75.0	82.2	3547	90.3	94.5

SPEED TORQUE

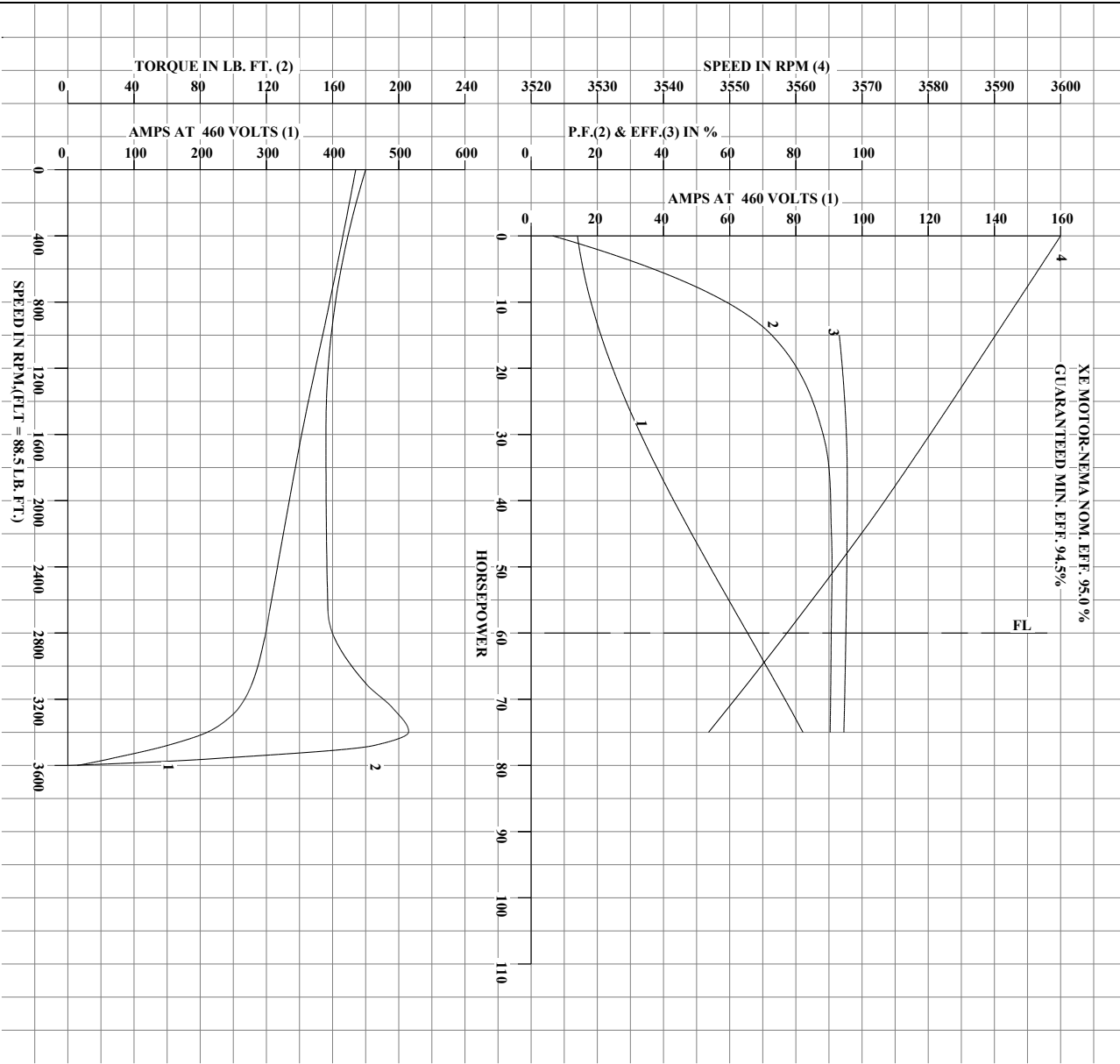
	RPM	% FULL LOAD TORQUE	TORQUE LB.-FT.	AMPERES
LOCKED ROTOR	0	203	180	435
PULL UP	1565	176	156	355
BREAKDOWN	3397	233	206	212
FULL LOAD	3559	100	88.5	65.1

AMPERES SHOWN FOR 460 VOLT CONNECTION. IF OTHER CONNECTIONS ARE AVAILABLE, THE AMPERES WILL VARY INVERSELY WITH THE RATED VOLTAGE.


TYPICAL DATA
 XE MOTOR-NEMA NOM. EFF. 95.0 %
 GUARANTEED MIN. EFF. 94.5%

	DRAWN BY: <u>W.L. SMITH</u>	AC MOTOR PERFORMANCE DATA	A36WG0760-R001
	CHECKED BY: <u>G. R. WEBB</u> APPROVED BY: <u>D. M. BYRD</u> DATE: <u>03/11/02</u>		
		DATE ISSUED: <u>09/26/18</u>	

REL.S.O.	RPM 3560	S.F. 1.15	ROTOR 418141005XE
FRAME 364HP	VOLTS 230/460	NEMA DESIGN F	TEST S.O. TYPICAL DATA
HP 60	AMPS 130/65.1	CODE LETTER G	TEST DATE --
TYPE P	DUTY CONT	ENCLOSURE TEFC	STATOR RES. @ 25°C .0254/101
PHASE/HERTZ 3/60	AMB °C/INSUL 40/F	E/S 491281	OHMS (BETWEEN LINES)



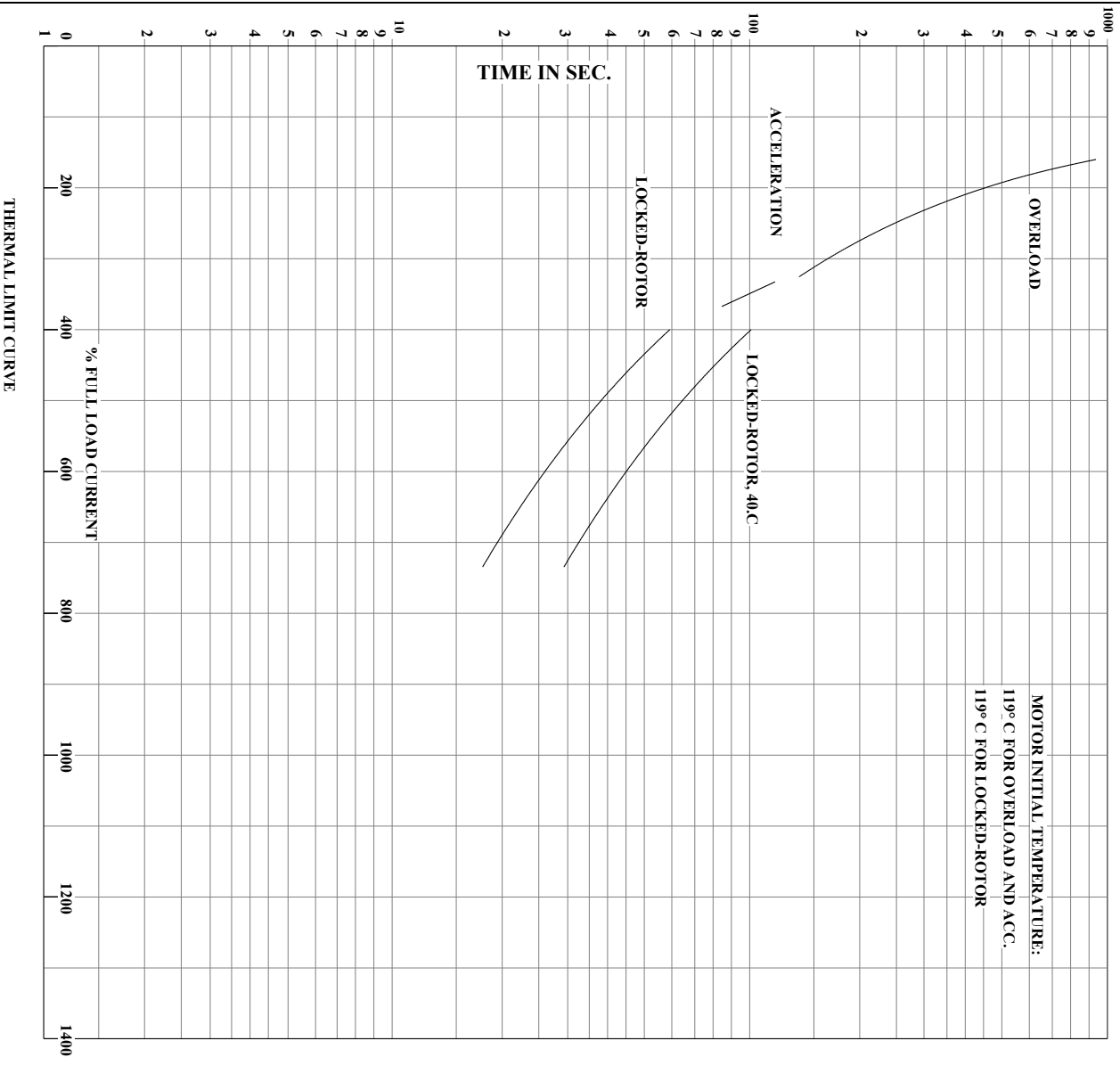
AMPERES SHOWN FOR 230/460 VOLT CONNECTION. IF OTHER VOLTAGE CONNECTIONS ARE AVAILABLE, THE AMPERES WILL VARY INVERSELY WITH THE RATED VOLTAGE.

	DRAWN BY: W. L. SMITH	AC MOTOR PERFORMANCE DATA	A36WG0760-R001
	CHECKED BY: G. R. WEBB APPROVED BY: D. M. BYRD DATE: 03/11/02		

usbpen

Printed on 09/26/2018 10:09 AM

REL.S.O.	RPM 3560	S.F. 1.15	ROTOR 418141005XE
FRAME 364HP	VOLTS 230/460	NEMA DESIGN F	TEST S.O. TYPICAL DATA
HP 60	AMPS 130/65.1	CODE LETTER G	TEST DATE --
TYPE P	DUTY CONT	ENCLOSURE TEFC	STATOR RES. @ 25°C .0254/101
PHASE/HERTZ 3/60	AMB °C/INSUL 40/F	E/S 491281	OHMS (BETWEEN LINES)

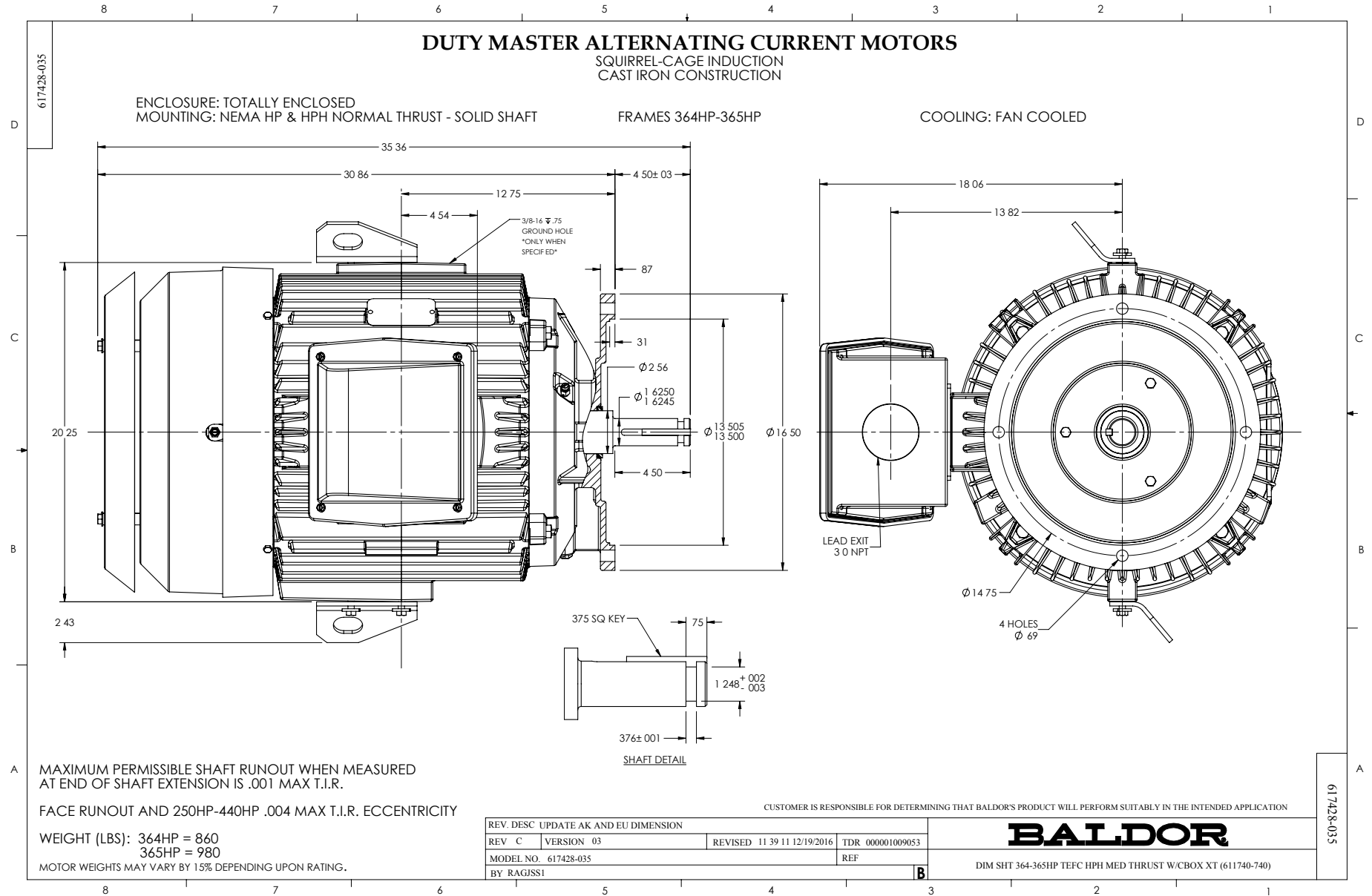


AMPERES SHOWN FOR 230/460 VOLT CONNECTION. IF OTHER VOLTAGE CONNECTIONS ARE AVAILABLE, THE AMPERES WILL VARY INVERSELY WITH THE RATED VOLTAGE.

	DRAWN BY: W.L. SMITH	AC MOTOR PERFORMANCE DATA	A36WG0760-R001
	CHECKED BY: G.R. WEBB APPROVED BY: D.M. BYRD DATE: 03/11/02		

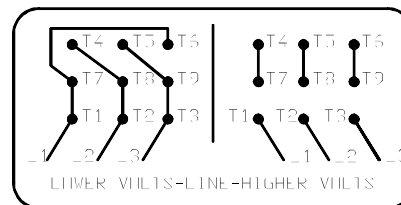
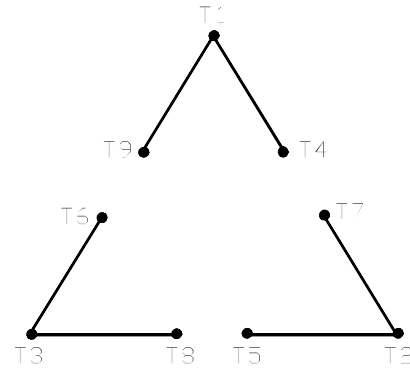
usbpen

Printed on 09/26/2018 10:09 AM



416820-002

A-C MOTOR
 CONNECTION DIAGRAM
 STANDARD 9 LEAD DELTA-CONNECTED



(N.P. 1575-B)

416820-002

REV. DESC: FONT CHANGE FOR PDF SEARCHABLE		
REV. LTR: A	VERSION: 01	TDR: 000001009382
FILE: \MGA\00000\661	REVISED: 02:46:19 02/13/2020	BY: MGHMTT
MTL: -	⊙ □	

BALDOR - RELIANCE®

CONN DIAG - STANDARD 9 LEAD, DELTA-CONNECTED

SH 1 of 1

Marketing maintained PDF of MN408:

<http://www.baldor.com/support/Literature/Load.ashx/MN408?ManNumber=MN408>

Marketing maintained PDF of MN416:

<http://www.baldor.com/support/Literature/Load.ashx/MN416?ManNumber=MN416>